



THE CAMPBELL COLLABORATION

What helps? What harms? Based on what evidence?

Crime and Justice Group (CCJG) November 2008 update



Donald T. Campbell

1916 - 1996





“Reforms as Experiments”

American Psychologist, 24, 409-429
(April 1969)



Problem:

**Policies are introduced
and celebrated by their proponents
as if they are certain to be
successful.**



The proponents tend to be staunch advocates,

and often refuse to countenance the possibility that the policy may not work.



Donald Campbell proposed
An experimental approach to social
policy:
Pilot,
Evaluate, then
Replicate
Modify
or Discard



THE CAMPBELL COLLABORATION

What helps? What harms? Based on what evidence?

Head Office

P.O. Box 7004 St. Olavs plass

0130 Oslo, Norway

E-mail: info@c2admin.org

Web: <http://www.campbellcollaboration.org>



- There are at present five Coordinating Groups:
 - Crime and Justice
 - Education
 - Social Welfare
 - Methods
 - Users Group



Campbell Collaboration's Mission:

Advancing the cause of “evidence-
based” social policy



The Crime and Justice Steering Committee (CCJG)

Co-chairs

David Weisburd, Hebrew Univ./George Mason Univ.

Peter Grabosky, Australian National University

Editor-in Chief

David Wilson, George Mason University

Managing Editor

Charlotte Gill, University of Pennsylvania

CCJG Members

Jan Andersson National Council for Crime Prevention (Sweden)

Catherine Blaya European Observatory of Violence in Schools (France)

David Farrington Cambridge University (UK)

Vicente Garrido University of Valencia (Spain)



Martin Killias University of Zurich (Switzerland)

Jerry Lee Jerry Lee Foundation (USA)

Friedrich Lösel University of Erlangen-Nuremburg and
Cambridge University (Germany)

Jacqueline Mallender Matrix Knowledge Group (UK)



Peter Neyroud National Policing Improvement Agency (UK)

Phyllis Schultze Rutgers University (USA)

Jonathan Shepherd University of Wales College of Medicine
(UK)

Lawrence Sherman University of Pennsylvania/ Cambridge
University (USA)

Hiroshi Tsutomi University of Shizuoka (Japan)

Peter van der Laan Netherlands Institute for the Study of Crime and Law Enforcement (Netherlands)

Brandon Welsh University of Massachusetts, Lowell (USA)



The Campbell Crime and Justice Group

Commissions and Publishes

Systematic reviews of high-quality research conducted worldwide on effective methods to *reduce crime and delinquency* and *improve the quality of justice*.



Crime and Justice Group: Progress

- Systematic Reviews
 - 17 PUBLISHED REVIEWS
 - 7 reviews undergoing editorial process
 - 12 reviews in development
- Protocols
 - 7 protocols undergoing editorial process
 - 6 protocols in development
- New Titles
 - 2 new titles awaiting approval





[Correctional boot camps: effects on offending](#)

David B. Wilson, Doris Layton MacKenzie and Fawn Ngo Mitchell; 2003.

[Scared Straight and other juvenile awareness programs for preventing juvenile delinquency](#)

Anthony Petrosino, Carolyn Turpin Petrosino and John Buehler; 2004.

[Counter-terrorism strategies](#)

Cynthia Lum, Leslie W. Kennedy and Alison J. Sherley; 2006.

[Custodial vs. non-custodial sentences: effects on re-offending](#)

Martin Killias, Patrice Villettaz and Isabel Zoder; 2006.

[Incarceration-based drug treatment: effectiveness on criminal behavior](#)

Ojmarrh Mitchell, David B. Wilson and Doris Layton MacKenzie; 2006.



[Non-custodial employment programs: impact on recidivism rates of ex- offenders](#)

Christy A. Visher, Laura Winterfield and Mark Coggeshall; 2006.

[Serious \(violent and chronic\) juvenile offenders: treatment effectiveness in secure corrections](#)

Vicente Garrido and Luz Anyela Morales; 2007.

[Street-level drug law enforcement](#)

Lorraine Mazerolle, David W. Soole and Sacha Rombouts; 2007.

[Cognitive-behavioral programs: effects for criminal offenders](#)

Mark W. Lipsey, Nana A. Landenberger and Sandra J. Wilson; 2007.

[Hot spots policing: effects on crime](#)

Anthony A. Braga; 2007.



[Cost-benefit analysis of sentencing](#)

Cynthia McDougall, Mark Cohen, Raymond Swaray and Amanda Perry; 2008.

[Court-mandated interventions for individuals convicted of domestic violence](#)

Lynette Feder, David B. Wilson and Sabrina Austin; 2008.

[Family programs implemented up to age 5: effectiveness in reducing later antisocial behavior/delinquency](#)

Alex R. Piquero, Brandon C. Welsh, David P. Farrington and Richard Tremblay; 2008.

[Improved street lighting: effects on crime](#)

David P. Farrington and Brandon C. Welsh; 2008.

[Problem-oriented policing: Effects on crime and disorder](#)

David Weisburd, Cody W. Telep, Joshua C. Hinkle and John E. Eck; 2008.



Second responder programs: Effects on repeat incidents of family abuse Robert C. Davis, David Weisburd and Bruce Taylor; 2008.

Mentoring programs to affect juvenile delinquency and associated Problems Patrick Tolan, David Henry, Michael Schoeny and Arin Bass; 2008



Steps to a Successful Review

- Title Registration
- Protocol
- Final Review
- Online Publication



Title Registration

- Submit title and brief description to Managing Editor
- Editorial checks
- Coordinating committee and co-chairs approve or decline title
- Title registered and posted on website



Protocol

- Document describing how the review will be carried out
- Editorial checks and revisions
- Peer reviews
- Circulated to Steering Committee for approval (3 weeks)
- Registered in C2-RIPE and posted on website

Final Review

- Conduct and write up systematic review
- Editorial checks and revisions
- Peer reviews
- Circulated to Steering Committee for approval (4 weeks)
- Registered and posted on website

Issues:

Delays in delivery

Issues:

Massive Bodies of Literature

Issues:

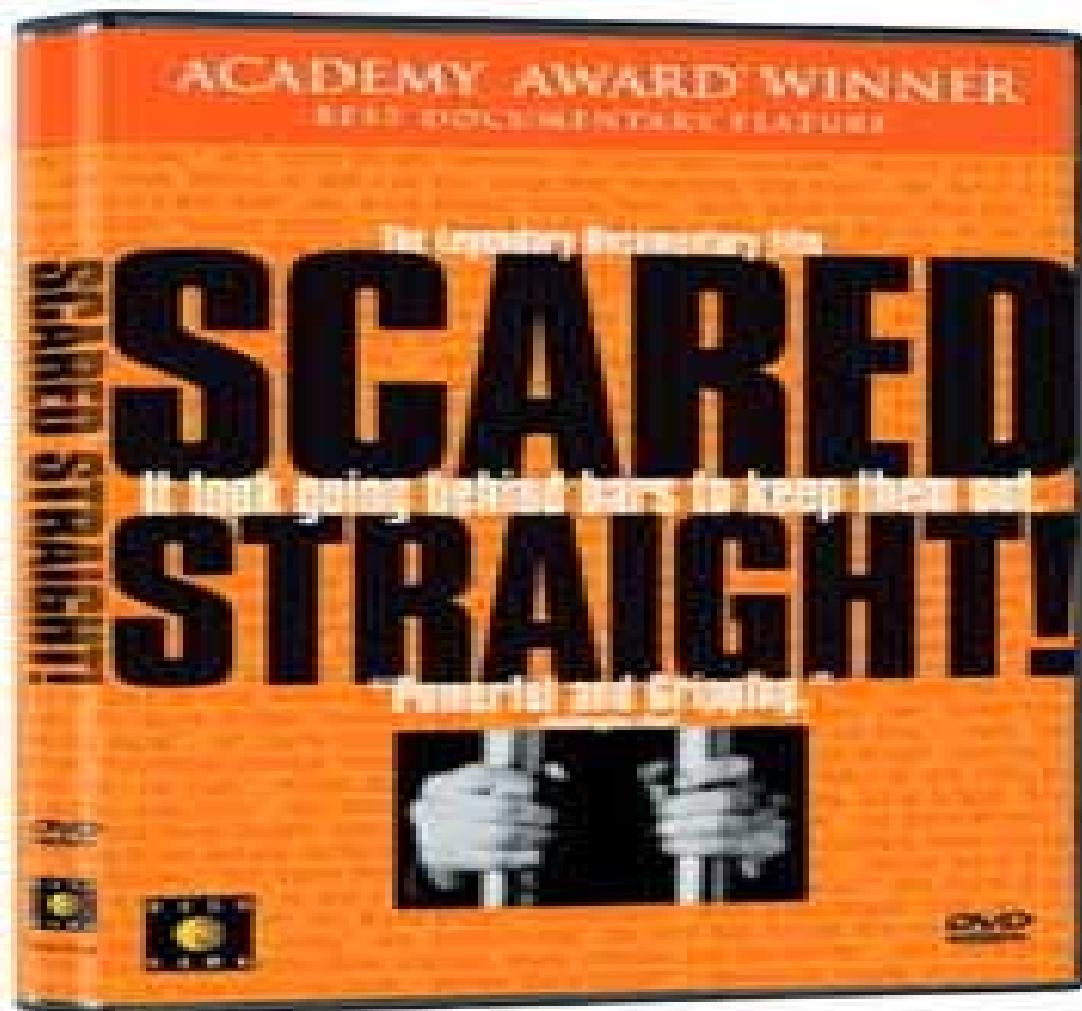
Small effect sizes

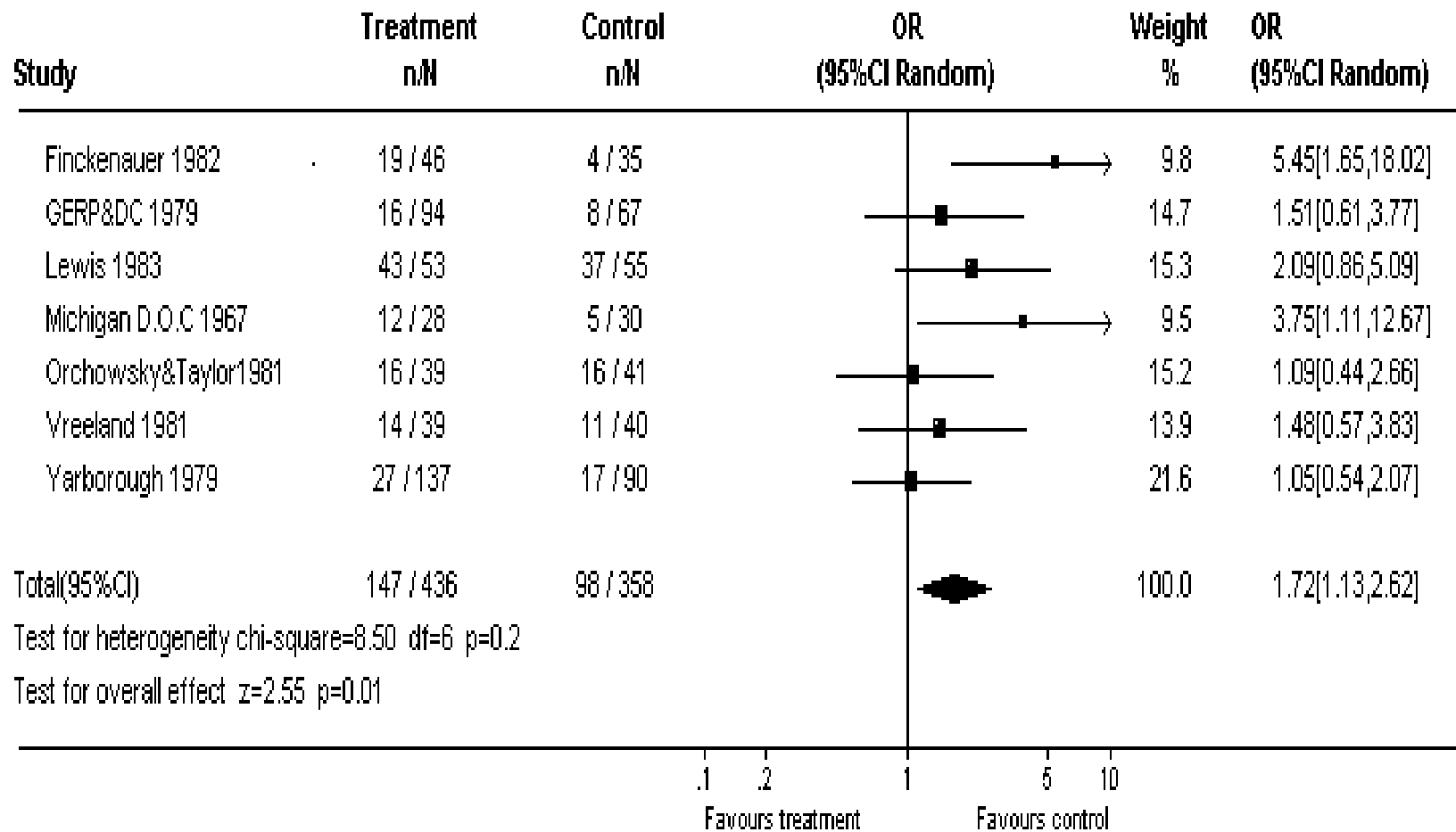
Issues:

Assessing the impact of multi-modal interventions

Issues:

Identification of Counterproductive Interventions







Issues:

Policy development through “deeper analysis” of findings

Wilson, Mackenzie and Mitchell, “The effects of correctional boot camps on offending”

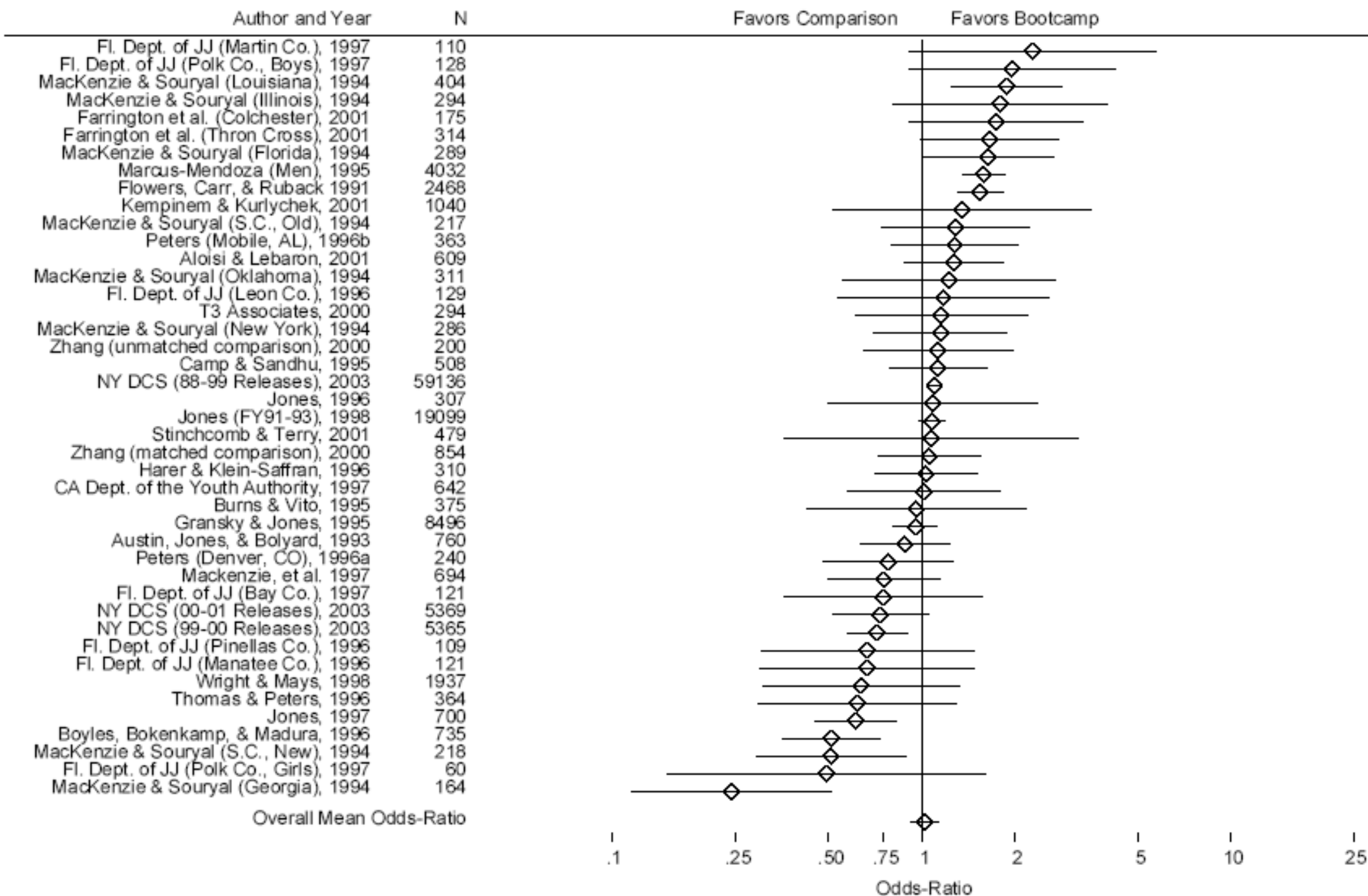


Figure 1: Odds-Ratio and 95% Confidence Interval for Any Recidivism (most general outcome)



Crime and Justice Group Coordinator.

Charlotte Gill

Jerry Lee Center of Criminology

University of Pennsylvania

Email: gillce@sas.upenn.edu

http://www.campbellcollaboration.org/crime_and_justice/index.php



Peter.Grabosky@anu.edu.au

Many thanks!